



Datema BOD MyFleet

Improve efficiency. Ensure compliance. Reduce costs.

Datema BOD MyFleet is the newest vessel tracking platform designed to meet the needs of today's maritime sector: a web-based, full function, tracking service at a highly competitive price.

How does it work?

Datema BOD MyFleet has the ability to have multiple data sources reporting into one platform, using an optimised combination of satellite and terrestrial AIS and a sophisticated integration of C-Map maritime charts with Google Maps. This enables you to receive more frequent positional reports with no artificial delay, whilst minimizing data charges. You are able to monitor the position, the performance and even additional environmental and risk factors of just one or an unlimited number of vessels at sea.

The next generation vessel tracking system for professional users

Leading-edge features & benefits

Datema BOD MyFleet is both flexible and adaptable. The standard features include:

- Worldwide view of all your vessels
- Historical AIS data of 12 months held online for immediate access
- Scheduled arrivals report – you have the ability to identify vessels that are due to arrive in any port around the world, the contact details are included.
- Weather forecast – 5-day weather forecast
- Piracy information – real time incident reporting
- In Vicinity – flexible querying of events for individual vessels, weather events or piracy activity
- Custom areas/zones – the system has Marpol zones and Notices to Mariners displayed on the mapping interface. BOD MyFleet allows you to import your own zones as well as being able to create an unlimited number of polygonal zones which allow users to automate the system and alert on zone entry/exit for areas such as anchorage, port terminals, berths, bunkers, cable routes, fishing territories, etc.
- API access – Datema BOD MyFleet allows you to pull various information such as Inmarsat-C positional data through the API so that these can be integrated directly with any other back office systems that you are using.
- Alerts via email or SMS text for free

Your pilot in nautical safety

Optional features

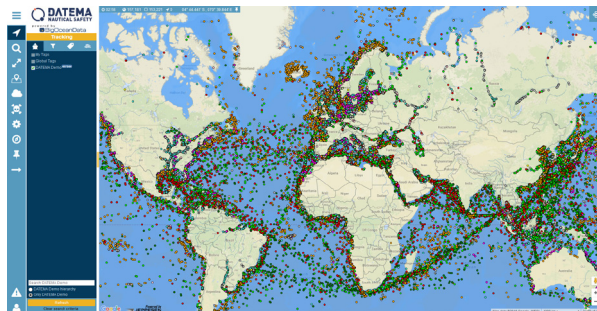
A number of special applications is offered that bring added, industry-specific functionality to clients involved in the maritime industry as well as full SSAS integration. Datema BOD MyFleet offers historical AIS data going as far back as 2009 showing port calls and when underway, the vessels MMSI, status, lat-lon position, speed, heading, time stamp. Additional information such as vessel type, cargo and flag may also be available.

Cost saving

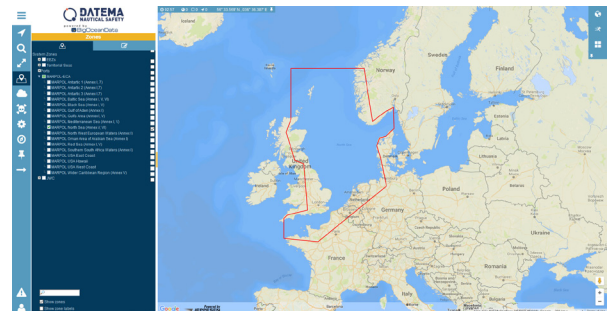
Datema BOD MyFleet offers more functionality at lower prices than any other supplier in the industry. A flexible pricing model allows you to only pay for what you need. The comprehensive functionality often means that you can cancel other subscriptions because these services are included within the Datema BOD MyFleet platform.

Curious what Datema BOD MyFleet could mean for your business?

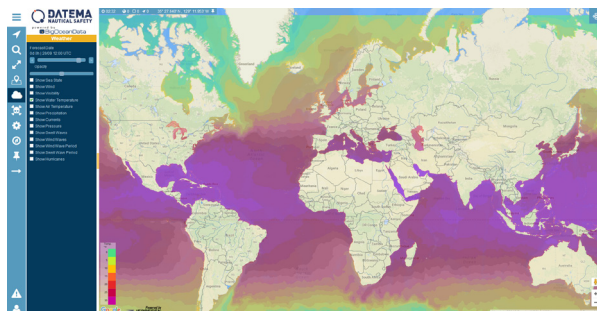
Please contact Datema Delfzijl B.V. for more details: email: digital@datema.nl or by phone: +31 (0) 596 63 52 52.



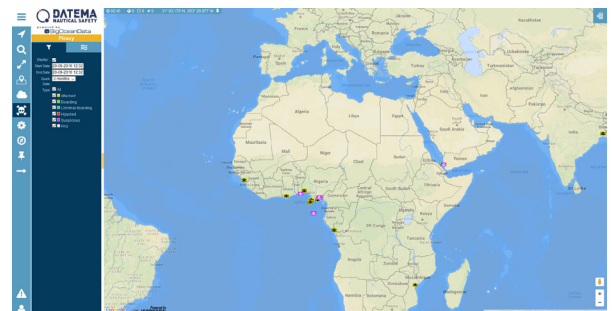
View the latest position of any vessel operating AIS, Satellite as well as terrestrial.



Custom areas/zones like MarPol, EEZs, Territorial Seas and JWC but also your own zones.



View historical and fore-cast weather conditions, a wide range of weather and environmental conditions available for visualisation.



Piracy information, real time incident reporting.

Datema Delfzijl B.V.

Zeesluizen 8, 9936 HX Delfzijl
P.O. Box 101, 9930 AC Delfzijl
The Netherlands
T +31 (0)596 63 52 52
F +31 (0)596 61 52 45

Rotterdam branch

Galvanistraat 148
3029 AD Rotterdam
The Netherlands
T +31 (0)10 436 61 88
F +31 (0)10 436 55 11

